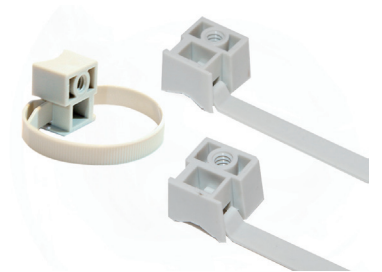


# Cable Ties

## Saddle mounting ties

- Suitable for Hanging with a screw or nail of products, cables and more on a wall, panel or structure in an easy and efficient manner.
- Using the product shortens the hanging time significantly.
- The product is disposable and not reusable
  - Note: After tightening the product, it cannot be released except by cutting the cable tie.
- The product is made of high quality PA66 nylon material from DuPont
  - Material especially resistant to harsh weather conditions, humidity, and hot areas



ISO 9001  
ISO 14001



ABS

ITEMS:

Catalog No	Model	Length (mm)	Width (mm)	Diameter (mm)	Tensile Strength (KGS)	Color	Quantity in bag	Quantity in carton (bag)
MCT2870165W	PMD-165	165	7.5	33	22	White	100	80
MCT2880165B	PMD-165B	165	7.5	33	22	Black	100	80
MCT2890180W	PMD-180	180	7.5	38	22	White	100	50
MCT2900180B	PMD-180B	180	7.5	38	22	Black	100	50

SKETCHES:

mm

