

Push Wire MPW-2 fire-resistant

MPW-2

- Suitable for use in connection boxes, Branching box, lighting fixtures, appliances and more
- Fast connection in thrust between multiple rigid conductors
- Clear Housing allows visual confirmation of connection
- Connects perfectly for stacking of several items

Operating voltage: 450VAC

Maximum current: 24A

Work Temperature: -20°C to 100°C

IP Rate: IP20

Materials:

Housing: PC Polycarbonate fire-resistant

Contacts: brass (70% steel)

Entrance: 2

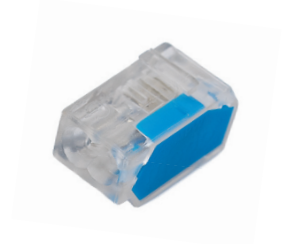
Maximum cable diameter entrance: 0.75mm² to 2.5mm²

Tools for installation: None

Safety: Tester slot for easy continuity testing and checking existence of voltage

Certification: VDE

Countries: Universal



ITEMS:

Catalog No	Model	Entrance	cable diameter	Color	Quantity in bag	Quantity in (carton (bags
MPW0105252P	MPW-2	2	0.75 to 2.5 mm ²	Transparent	100	30

SKETCHES:

mm

